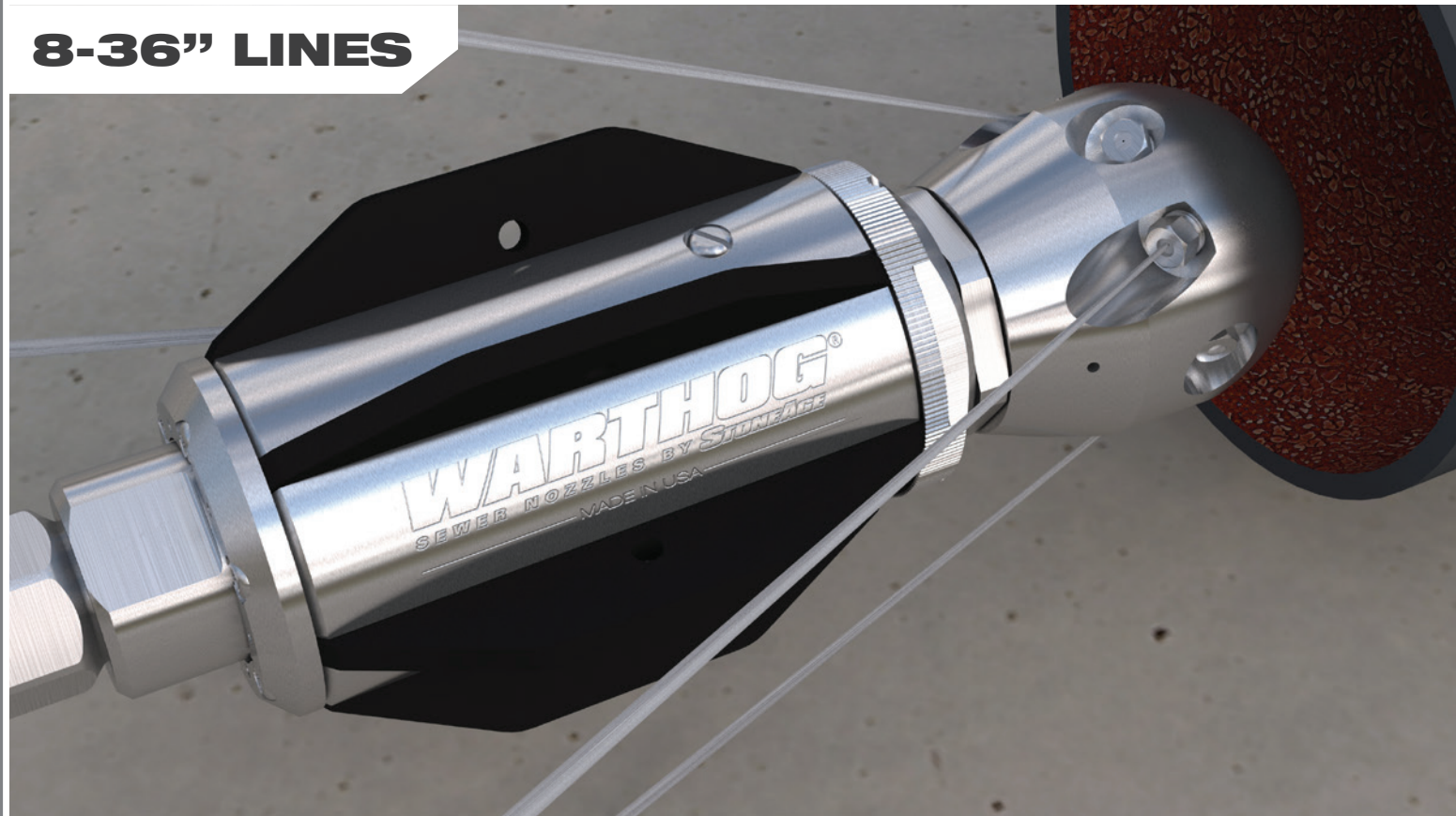
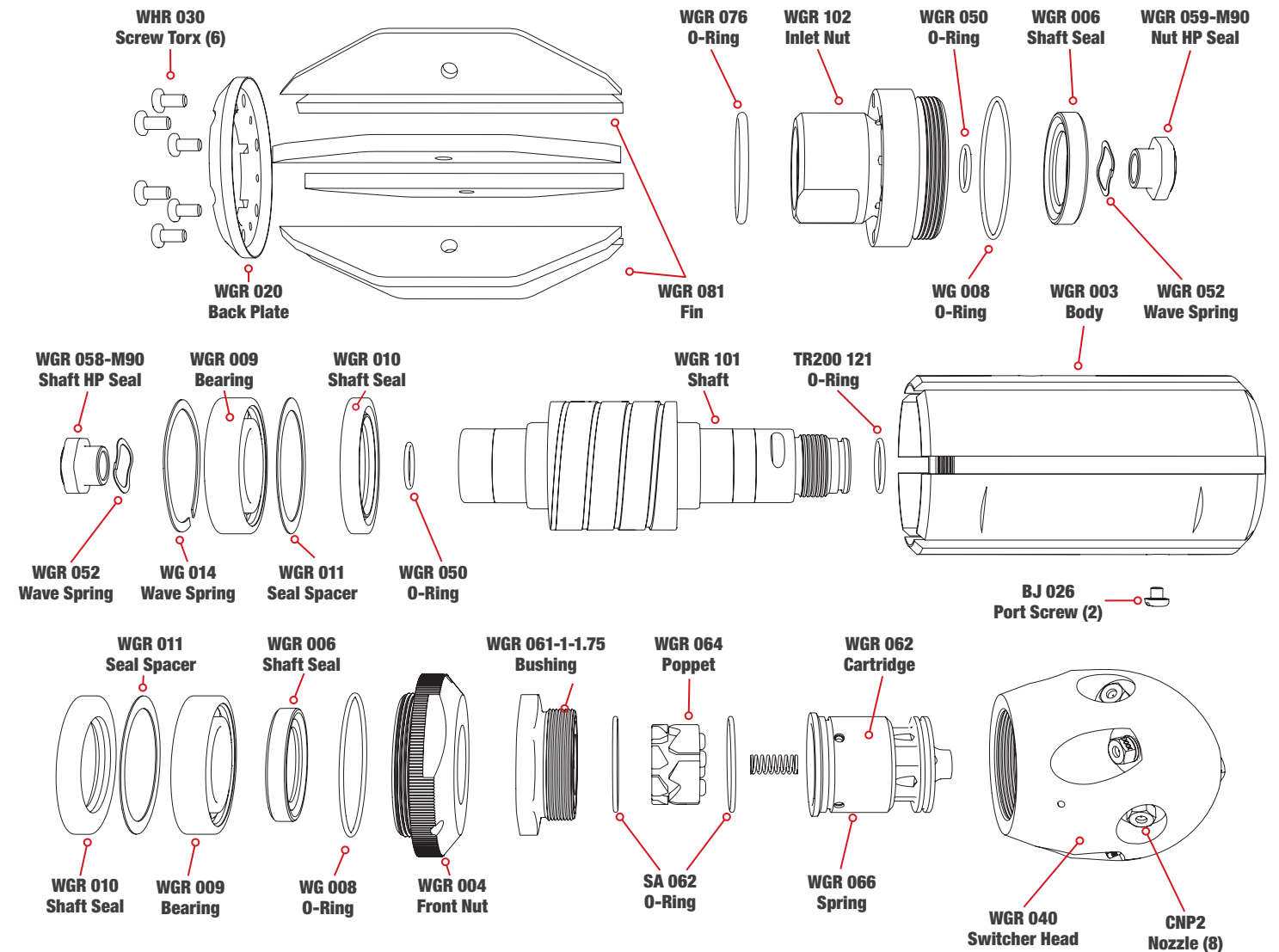


8-36" LINES



WGR SWITCHER

EXPLODED VIEW - PART NAMES AND NUMBERS



WGR SWITCHER

The new WGR Switcher is two tools in one. Switch between pulling or cleaning without removing the nozzle from the pipe. When the pump is idled down and brought back to pressure the tool will switch the water flow between two different sets of jets.

FEATURES:

- Eliminates extra runs needed to swap nozzles – saving water and time
- Run more jobs with one tank of water
- Switch to pulling jets for maximum thrust. Excellent for longer runs, climbing hills, going against the flow and flushing large amounts of material
- Switch to cleaning jets to maximize power for cutting roots and clearing debris, all with out affecting the houses

WGR SWITCHER

Up to 8k psi (550 bar)
50-80 gpm Flows (190-300 l/min)
8"-36" in. Lines (203-914 mm)
Two Inlet Options Available

WGR Switcher Specifications

MAXIMUM PRESSURE	5k psi	350 bar
OPERATING PRESSURE	1500-5k psi	100-350 bar
ROTATION SPEED	150-300 rpm	
FLOW	50-80 gpm	190-300 l/min
FLOW RATING	6 Cv	
INLET CONNECTION	1 in. NPT or 1 in. BSPP	
NOZZLE PORTS	7 x 1/8 NPT	
DIAMETER	4.5 in.	114 mm
LENGTH	10.25 in.	260 mm
WEIGHT	13 lb	5.9 kg

OUR CUSTOMERS SUCCEED

“ We can now use the same nozzle in either cutting or flushing mode. We're very close to 50% faster with 35% less water usage when using the Switcher vs a rotational/fixed nozzle combination.”

JASON DEMARTINI - VALLEJO SANITATION

Maintenance & Overhaul Kits

WGR 600 • SERVICE KIT

- (1) BJ 026 Port Screw
- (1) BJ 048-M Visc Fluid, 6oz
- (1) BJ 062-S Antiseize, 2g
- (1) GP 049 Grease Syringe
- (1) TR200 121 Shaft O-Ring
- (1) WG 008 Nut O-Ring
- (2) WGR 006 Shaft Seal – Outer
- (2) WGR 009 Bearing
- (2) WGR 010 Shaft Seal – Inner
- (2) WGR 011 Seal Spacer
- (2) WGR 050 O-Ring
- (6) WHR 030 Torx Screws

WGR 601 • FLUID KIT

- (1) WGR 601 Fluid Service Kit
- (1) BC 410 Syringe
- (2) BJ 026 Port Screw
- (1) WGR 048 Visc Fluid, 6oz
- (3) VISC. FLUID OPTIONS AVAILABLE.

WGR 602 • HP SEAL KIT

- (1) BJ 062-S Antiseize, 2g
- (2) WGR 052 HP Seal Wave Spring
- (1) WGR 058 HP Seal – Shaft
- (1) WGR 059 HP Seal – Nut
- (2) WGR 050 HP Seal O-Ring

WGR 610 • OVERHAUL KIT

- (2) BJ 026 Port Screw
- (1) BJ 062-S Antiseize, 2g
- (1) GP 025-P2SS Front Jet Plug
- (1) TR200 121 Head – Shaft O-Ring
- (1) WG 008 Nut O-Ring
- (1) WG 014 Bearing Wave Spring
- (2) WGR 006 Shaft Seal – Outer
- (2) WGR 009 Bearing
- (2) WGR 010 Shaft Seal – Inner
- (2) WGR 011 Seal Spacer
- (6) WHR 030 Torx Screws
- (1) BJ 048-M Visc Fluid, 6oz

- (2) WGR 052 HP Seal Wave Spring
- (1) WGR 058 HP Seal – Shaft
- (1) WGR 059 HP Seal – Nut
- (1) WGR 076 Weep Seal O-Ring
- (1) WGR 180 Torx L-Wrench
- (2) WGR 050 HP Seal O-Ring

WGR 612 • TOOL KIT

- (1) WGR 180 Torx L-Wrench
- (1) WGR 181 Removal Press Tube
- (1) WGR 182 Installation Press Tube
- (1) WGR 183 Hex Tool
- (1) WGR 184 HP Seal Install Tool