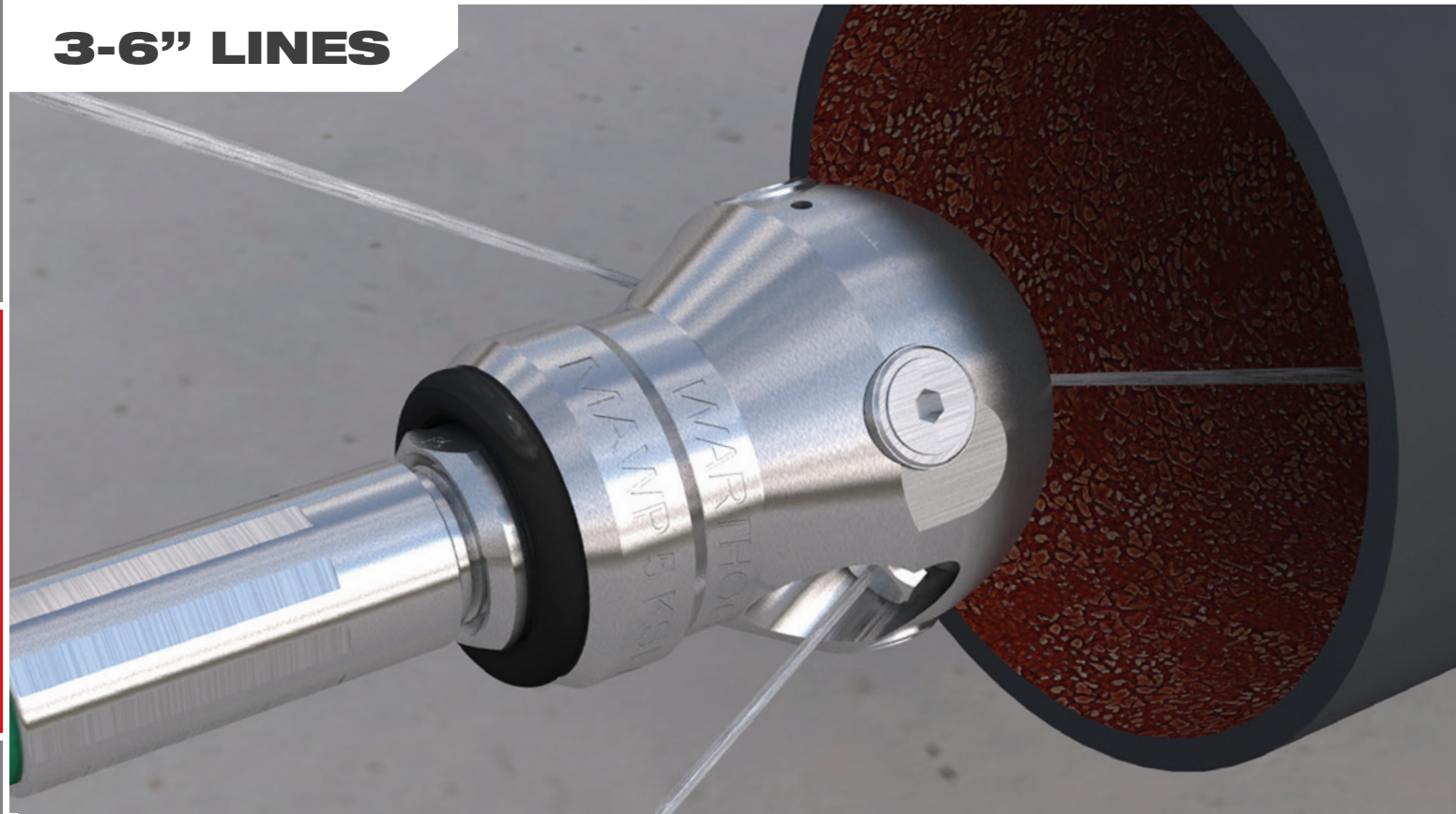


3-6" LINES



WT-3/8-C

Our smaller Classic series models can negotiate elbows and clean-outs commonly found in laterals at homes, buildings, restaurants and other light commercial facilities. This tool is most commonly used on small capacity pumps and cart jettors. Also an excellent choice for cutting roots, clearing ice and removing blockages.

FEATURES:

- Excellent for navigating elbows
- Cuts roots, clears ice and blockages
- Carbide buttons extend tool life up to 5 times
- Replaceable AP2 nozzles

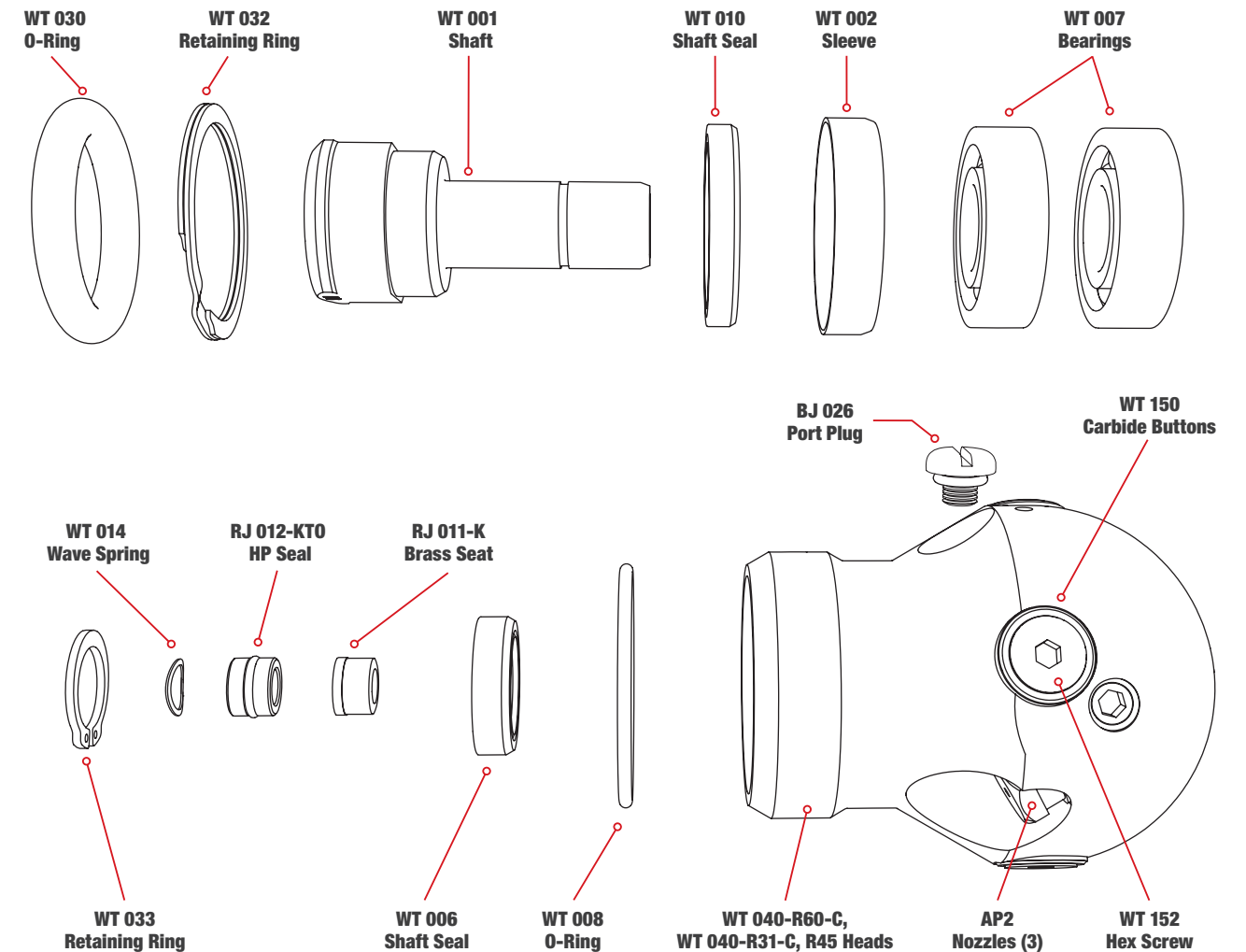
WT-3/8-C	Up to 5k psi (350 bar)
3-6" Lines (76-152 mm)	5-12 gpm Flows (20-45 l/min)
	Classic Workhorse Model

WT-3/8-C Specifications

MAXIMUM PRESSURE	5k psi 350 bar
OPERATING PRESSURE	1500-5k psi 100-350 bar
ROTATION SPEED	300-500 rpm
FLOW	5-12 gpm 20-45 l/min
FLOW RATING	0.75 Cv
PULLING FORCE	5-20 lb 22-90 N
INLET CONNECTION	3/8 NPT or BSPP
TOOL DIAMETER	1.9 in. 48 mm
LENGTH	3.0 in. 76 mm
NOZZLE PORTS	3 x 1/8 NPT
WEIGHT	1.2 lb .54 kg

WT-3/8-C

EXPLODED VIEW - PART NAMES AND NUMBERS



Maintenance & Overhaul Kits

WT 600 • SERVICE KIT

- (1) **BC 410** Syringe Assembly
- (1) **BJ 026** Port Plug
- (1) **BJ 048-S** Visc. Fluid, 6oz.
- (1) **BJ 062-S** Antiseize, 2g
- (1) **GP 025-P2SS** Hex Socket Plug
- (1) **RJ 011-K** Brass Seat
- (1) **RJ 012-KT0** HP Seal & O-Ring
- (1) **WT 014** Wave Spring

WT 602 • SEAL KIT

- (1) **RJ 011-K** Brass Seat
- (1) **RJ 012-KT0** HP Seal & O-Ring
- (1) **WT 014** Wave Spring

WT 610 • OVERHAUL KIT

- (1) **BJ 026** Port Plug
- (1) **BJ 048-S** Visc. Fluid, 6oz.
- (1) **RJ 011-K** Brass Seat
- (1) **RJ 012-KT0** HP Seal & O-Ring
- (1) **WT 006** Seal
- (2) **WT 007** Bearing, Ball
- (1) **WT 008** O-Ring
- (1) **WT 010** Seal
- (1) **WT 014** Wave Spring
- (1) **WT 032** Retaining Ring
- (1) **WT 030** O-Ring

WT 612 • TOOL KIT

- (1) **BA 100** Retaining Ring Pliers
- (1) **WT 105** Tool